

LINCOLN PARK NEIGHBORHOOD

GETTING READY FOR 2015!

LPNA Zoning and Urban Development Committee Presentation to
the Honorable J. Michael Houston, Mayor of Springfield, IL
Friday, September 27, 2013

THE LINCOLN FUNERAL TRAIN

MAY 2ND, 2015

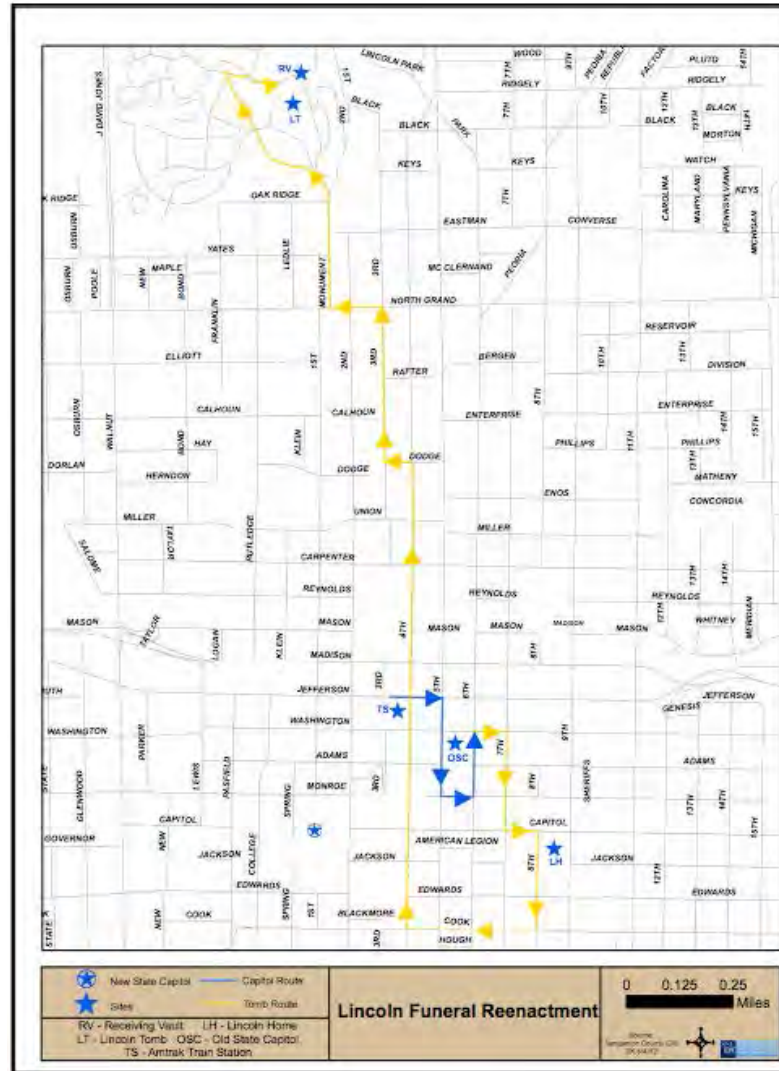
- **On May 2, 1865 President Abraham Lincoln's body was laid to rest in Oak Ridge Cemetery in Springfield, Illinois. Our Country will commemorate the historic 150th anniversary of this event with a reenactment of the Lincoln Funeral Train. True to history, it will arrive in Springfield, Illinois on the same day, May, 2nd, 150 years later.**
- Along the way the 2015 Lincoln Funeral Train will follow the same dates from start to finish, starting in Washington, D.C. on April 21, 2015 and ending in Springfield, IL on May 2, 2015.

ROUTE OF FUNERAL TRAIN



<http://www.the2015lincolnfurtrain.com/2015-route/>




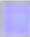









Map of Route in Springfield

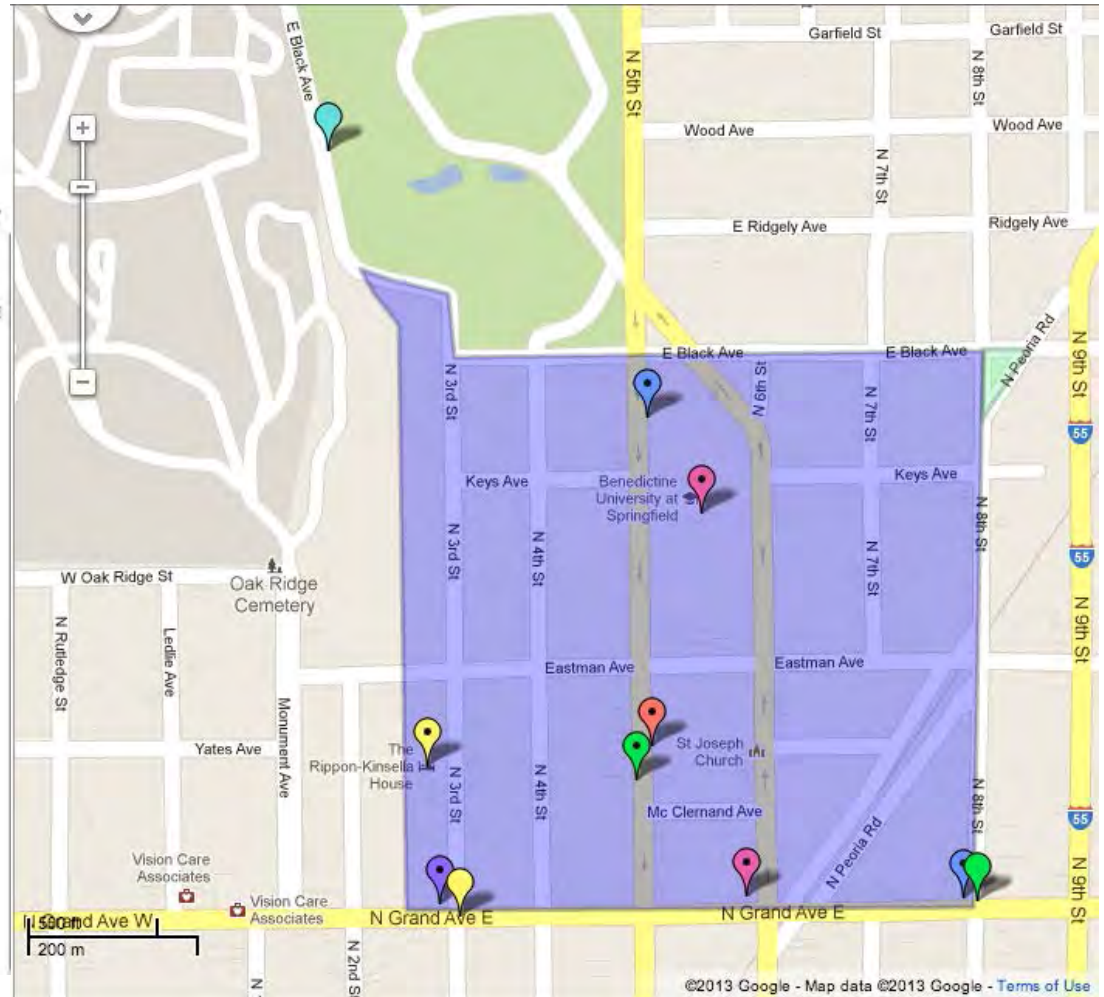


PROPOSAL: IMPROVE THE STREETScape BETWEEN NORTH GRAND BETWEEN 9TH AND MONUMENT BY MAY 2, 2015.

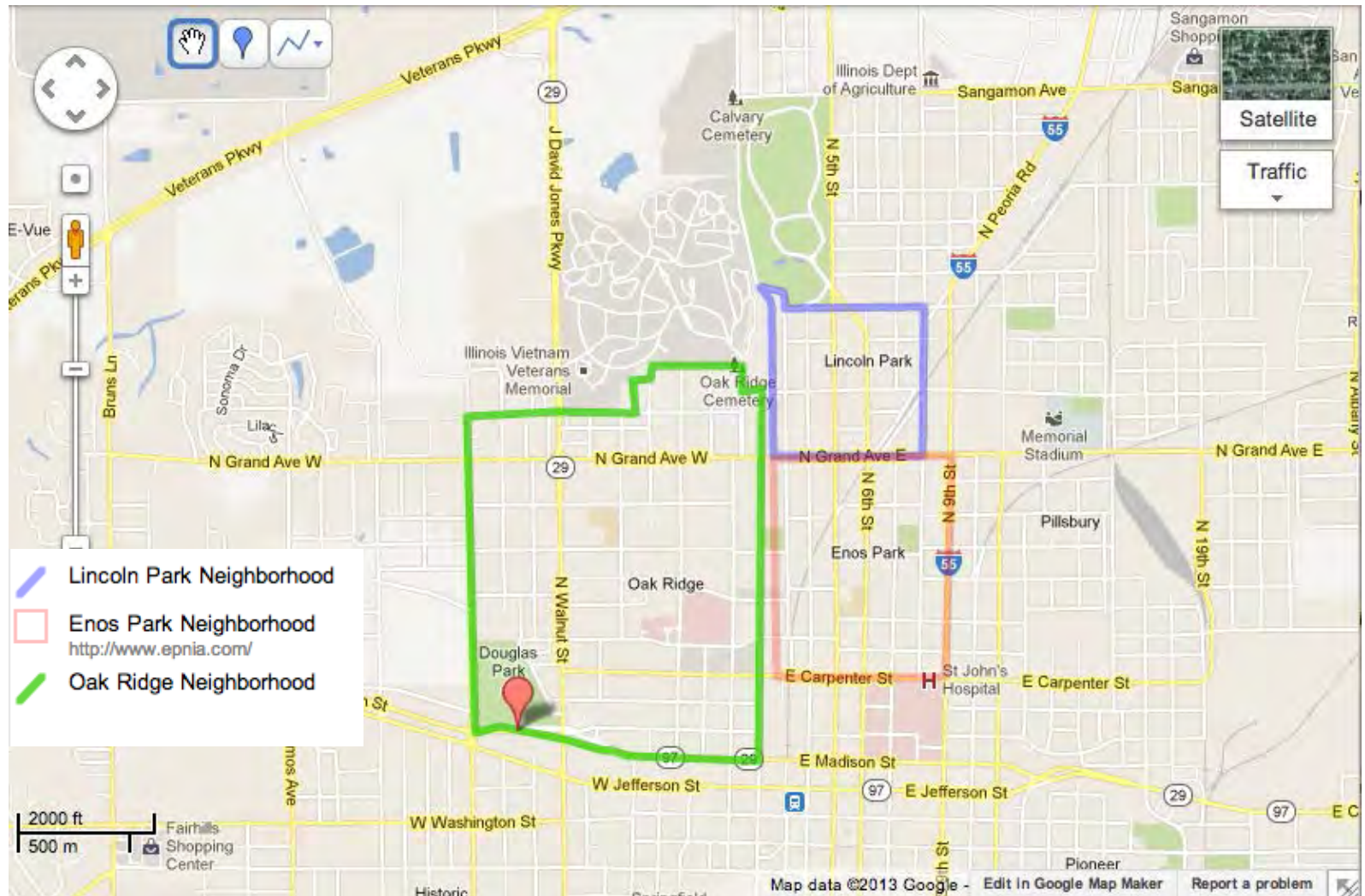
- In anticipation of the 2015 reenactment of Lincoln's Funeral procession, the Lincoln Park Neighborhood Association (LPNA) proposes that the section of North Grand which encompasses three neighborhoods, Oak Ridge, Enos Park and Lincoln Park, be improved.
- Not only is it a main entry way into these neighborhoods, but also to Springfield's internationally renowned tourist destination, Lincoln's Tomb.

LINCOLN PARK IS ONE OF THE OLDEST NEIGHBORHOODS IN SPRINGFIELD WITH HOMES DATING BACK TO THE LINCOLN ERA. THE MOST PROMINENT BORDER IS NORTH GRAND.

-  Fifth Street Renaissance
-  George Brinkerhoff House
The George Brinkerhoff House is also sometimes referred to as "T Castle".
-  The Rippon-Kinsella House
The Rippon-Kinsella House was Built in 1871 by John Rippon in the Italianate style.
-  Lincoln Park Neighborhood
-  St Joseph School
-  Springfield Southern Baptist
-  Mel-O-Cream Donuts
-  Sam's Italian Pizza
-  Triangle with convenience store
-  Benedictine University
-  Kumler Outreach Ministries
-  Original Entrance to Oak Ridge
-  Noonan True Value Hardware



OTHER NORTH SIDE NEIGHBORHOODS



SUGGESTED IMPROVEMENTS

- **Green Space**, where possible, including city-owned property
 - Trees
 - Grass
 - Hanging Planters
 - Window Boxes

SUGGESTED IMPROVEMENTS (CONT.)

- **Utility Improvements**

- Lighting to extend the Downtown and Enos Park historic replica effort
- Decorative lighting between 5th and 6th to Lincoln Park and surrounding Benedictine
- Bury Wires - Electrical and Phone

SUGGESTED IMPROVEMENTS (CONT.)

- **Sidewalk Enhancements**
 - Bricks to replace concrete
 - Benches
 - Bike Racks



SUGGESTED IMPROVEMENTS (CONT.)

- **Other**
 - Facades on buildings
 - Signage uniformity

STREETSCAPES AND FACADES MAKE A DIFFERENCE!

- Celtic Mist Pub (7th Street)
- The Convention & Visitors Bureau (7th Street)
- Monument Ave

CELTIC MIST , 117 SOUTH 7TH ST.

- Then



- Now



CONVENTION AND VISITOR'S BUREAU 109 NORTH SEVENTH STREET

- Then



- Now



MONUMENT AVENUE



WITH A LITTLE TLC....

- The following slides show the current state of North Grand Ave., East and our suggestions for improvement.



NORTH GRAND AVE., EAST

SUGGESTIONS: GREEN SPACES, FAÇADE UPGRADE



9TH & NORTH GRAND AVE., EAST (BP)

SUGGESTIONS: GREEN SPACES, BURY WIRES



6TH & NORTH GRAND AVE., EAST

SUGGESTIONS: DECORATIVE LIGHTING, HANGING PLANTS



11TH & NORTH GRAND AVE., EAST (TRUE VALUE)

SUGGESTIONS: GREEN SPACE, SIDEWALK ENHANCEMENTS



8TH & NORTH GRAND AVE., EAST (INTERSECTION)

SUGGESTIONS: ADD GREEN SPACE



700 BLOCK OF NORTH GRAND AVE., EAST (SAM'S)

SUGGESTIONS: GREEN SPACE AND FACADES



700 BLOCK OF NORTH GRAND AVE., EAST (LIBRARY)

SUGGESTIONS: GREEN SPACE AND FACADES



700 BLOCK OF NORTH GRAND AVE., EAST

SUGGESTIONS: GREEN SPACE, SIDEWALK ENHANCEMENTS



700 BLOCK OF NORTH GRAND AVE., EAST

SUGGESTIONS: FACADES, GREEN SPACE, BRICK



700 BLOCK OF NORTH GRAND AVE., EAST

SUGGESTIONS: GREEN SPACE, FAÇADES



700 BLOCK OF NORTH GRAND AVE., EAST

SUGGESTIONS: SIDEWALK ENHANCEMENTS, IMPROVED SIGNAGE



600 BLOCK OF NORTH GRAND AVE., EAST (TOMAHAWK AWARDS)

SUGGESTIONS: GREEN SPACE, BURY WIRES



500 BLOCK OF NORTH GRAND (MEL-O-CREAM)

SUGGESTIONS: GREEN SPACE-TREES



500 BLOCK OF NORTH GRAND (CRAVENS LAUNDRY)

SUGGESTIONS: GREEN SPACE



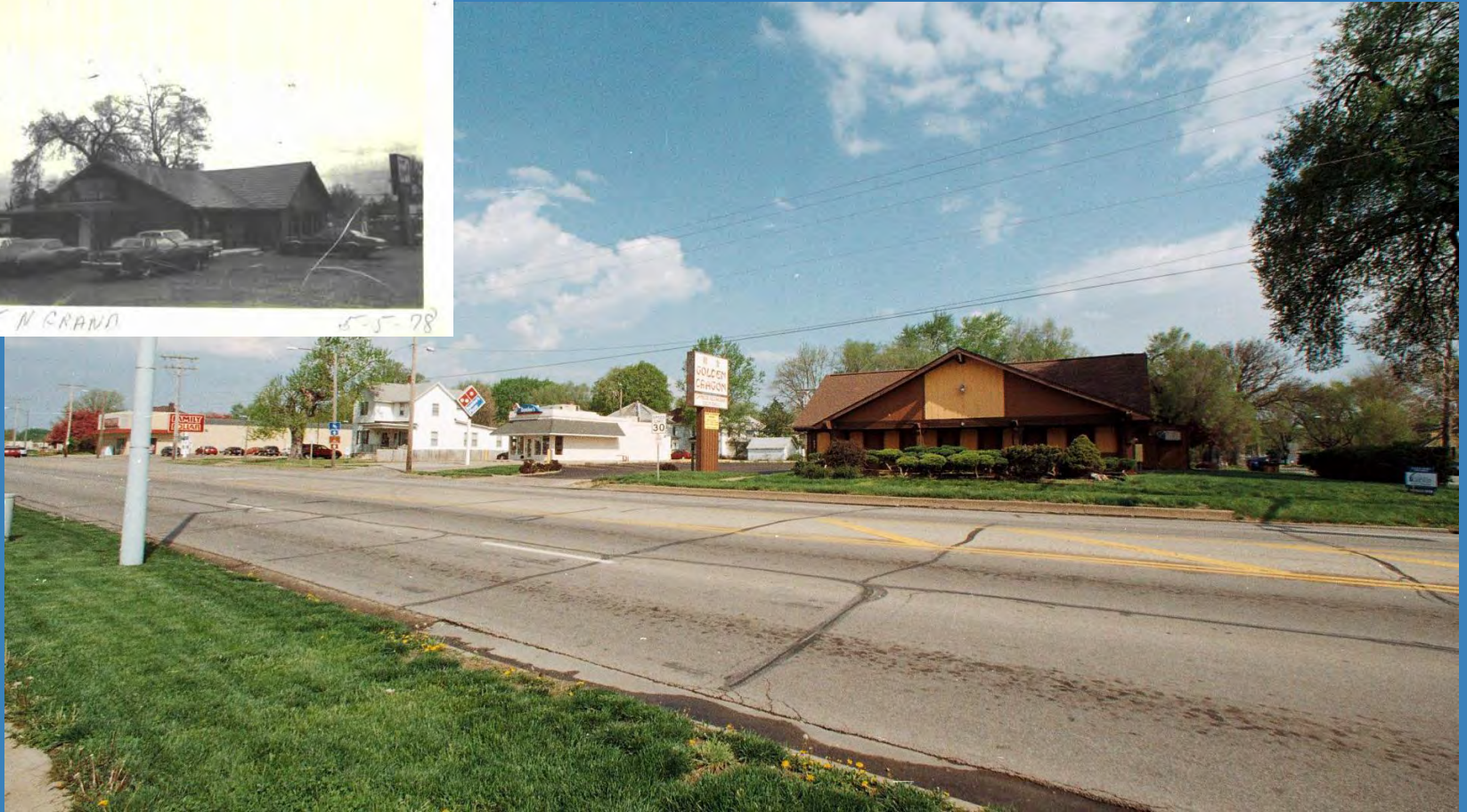
5TH & NORTH GRAND

SUGGESTIONS; GREEN SPACE



525 N GRAND

5-5-78



400 BLOCK OF NORTH GRAND AVE., EAST (GOLDEN DRAGON)

SUGGESTIONS: SIDEWALK ENHANCEMENTS, GREEN SPACE



300 BLOCK OF NORTH GRAND AVE., EAST (FAMILY DOLLAR)

SUGGESTIONS: GREEN SPACE - TREES



200 BLOCK OF NORTH GRAND AVE., EAST (SOUTHERN BAPTIST Church)

SUGGESTIONS: BURY WIRES, GREEN SPACE - TREES



200 BLOCK OF NORTH GRAND AVE., EAST

SUGGESTIONS: BURY WIRES, SIDEWALK ENHANCEMENTS



200 BLOCK OF NORTH GRAND AVE. EAST (GLASS SHOP)

SUGGESTIONS: GREEN SPACE



200 BLOCK OF NORTH GRAND AVE., EAST (HOUSE OF MUSIC)

SUGGESTIONS: GREEN SPACE, BURY WIRES



NORTH GRAND AVE. EAST (QIK-N-EZ AND GOLDEN DRAGON)

SUGGESTIONS: GREEN SPACE - TREES



600 BLOCK OF NORTH GRAND AVE., EAST (HAPPY DAZE)

SUGGESTIONS: GREEN SPACE, TREES



700 BLOCK OF NORTH GRAND AVE., EAST (CIGAR SHOP & EW'S)

SUGGESTIONS: SIDEWALK ENHANCEMENTS, GREEN SPACE



ORIGINAL ENTRANCE TO OAK RIDGE



LINCOLN'S TOMB

CREDITS, PHOTOS

- Photos of North Grand, the original Oak Ridge Cemetery entrance and the Abraham Lincoln Monument were taken by Michael Kotner
- Before and after photos, old photos of businesses: Sangamon County website, parcel search <http://www.co.sangamon.il.us/>
- Photo of Rippon Kinsella House <http://www.ripponkinsella.com/Index.aspx>

Credits, Maps

- Map of the Route of The Lincoln Funeral Train, <http://www.the2015lincolnfunealtrain.com/2015-route/>
- Map of the Lincoln Park Neighborhood Association <http://goo.gl/maps/UiToc>
- Map of three Northside Neighborhood Associations <https://maps.google.com/maps?hl=en&tab=wl>
- Map of the Route of the Lincoln Funeral Train in Springfield IL, Sangamon Co. GIS, <http://lincolnfunealtrain.org/index.php>

CREDITS, CONTENT

- 2015 Lincoln Train Route: <http://www.the2015lincolnfuneraltrain.com/2015-route/>
- The 2015 Lincoln Funeral Home Coalition <http://lincolnfuneraltrain.org/index.php>
- Lincoln Park Neighborhood Association <http://www.lpnaspringfield.org/>
- Enos Park Neighborhood Improvement Association <http://www.epnia.com/>
- Oak Ridge Neighborhood Association http://www.neighborhoodlink.com/Oak_Ridge_-_Springfield

LPNA

ZONING AND URBAN DEVELOPMENT COMMITTEE

CONTACT INFORMATION

- Jennifer Aholt, President LPNA, jenniferra74@yahoo.com
- Suzann Weissberg, Committee Chair
s.weissberg@yahoo.com
- Mike Kotner, Committee Member
mkotner@hotmail.com
- Kerry Lewis, Committee Member
chris_lewis_@comcast.net
- Paul Romitis, Committee Member
romitis@comcast.net
- Jenni Dahl, Committee Member
jennidahl2001@yahoo.com
- Link to Presentation <http://goo.gl/ZCwNQ>

Preface to the report prepared by the Springfield-Sangamon County Regional Planning Commission

Oak Ridge Cemetery is the 2nd most visited Cemetery in the United States. That means a huge number of tourists visiting Springfield, and all will see at least a part of North Grand Avenue. Add to that the number of people who visit the Illinois State Fair every August.

North Grand Avenue borders the Medical District and is in very close proximity to SIU School of Medicine and the vastly expanding Memorial and St. John's Hospitals.

In addition Benedictine University, located just north of North Grand Avenue now has an enrollment of 860, with students from Students from around the world, including China, Vietnam, Germany, Ireland, Ecuador, Brazil, Canada and France.

Just a little further north you will find Lincoln Park with its beautiful trees, swimming pool, ice skating rink and Fun Shop. Plus it is the home of the Springfield Blues!

North Grand Avenue needs a face lift! Just look what it could look like:



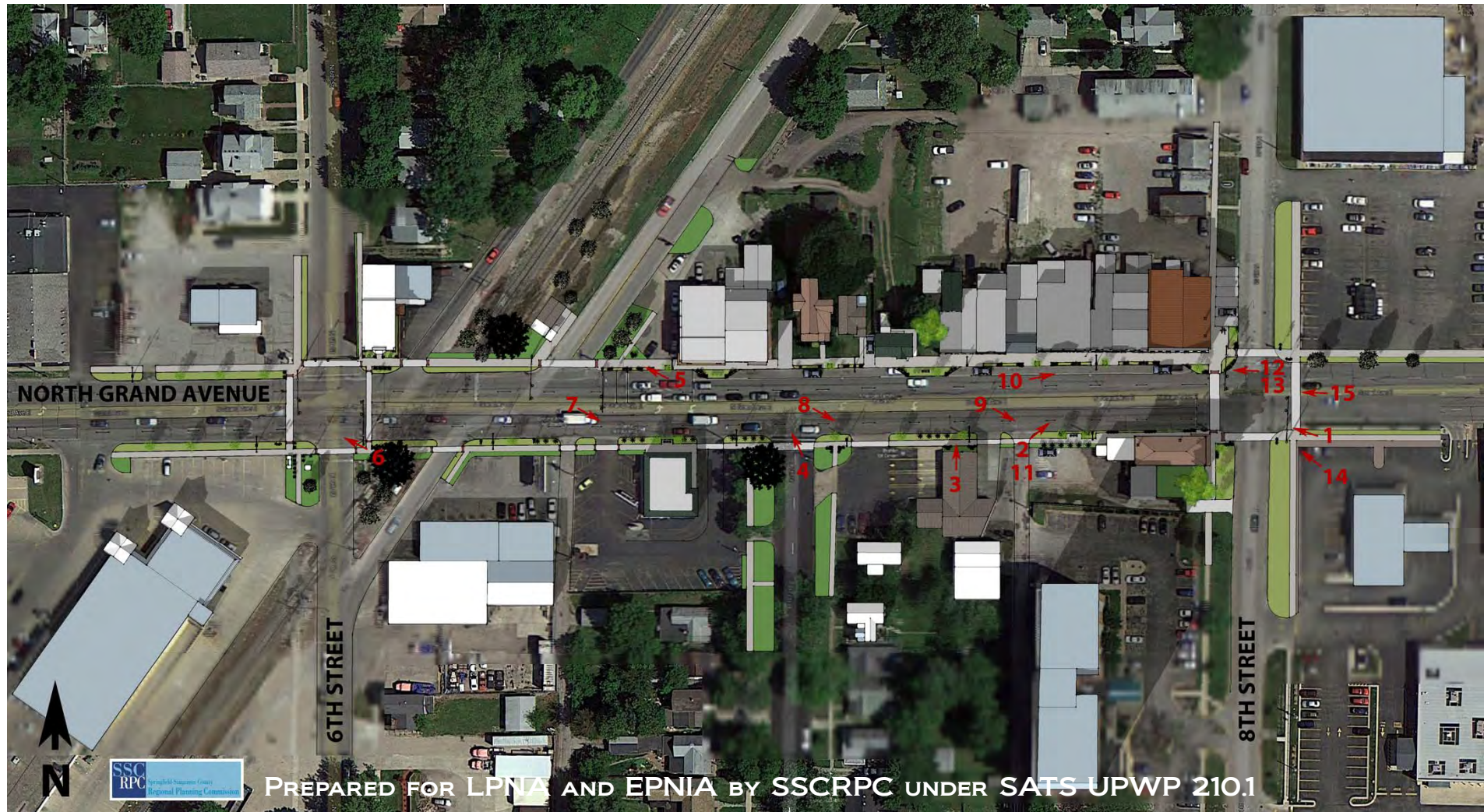
NORTH GRAND AVENUE

THE STREETScape DESIGN

EXISTING SITE



PROPOSED DESIGN PLAN



VIEW 1



PREPARED FOR LPNA AND EPNIA BY SSCRPC UNDER SATS UPWP 210.1

EXISTING VIEW



VIEW 2



VIEW 3



EXISTING VIEW



VIEW 4



PREPARED FOR LPNA AND EPNIA BY SSCRPC UNDER SATS UPWP 210.1

VIEW 5



PREPARED FOR LPNA AND EPNIA BY SSCRPC UNDER SATS UPWP 210.1

EXISTING VIEW



VIEW 6



PREPARED FOR LPNA AND EPNIA BY SSCRPC UNDER SATS UPWP 210.1



EXISTING VIEW



VIEW 7



VIEW 8



PREPARED FOR LPNA AND EPNIA BY SSCRPC UNDER SATS UPWP 210.1

VIEW 9



PREPARED FOR LPNA AND EPNIA BY SSCRPC UNDER SATS UPWP 210.1

VIEW 10



PREPARED FOR LPNA AND EPNIA BY SSCRPC UNDER SATS UPWP 210.1

VIEW 11



VIEW 12



PREPARED FOR LPNA AND EPNIA BY SSCRPC UNDER SATS UPWP 210.1

EXISTING VIEW



VIEW 13



VIEW 14



VIEW 15

